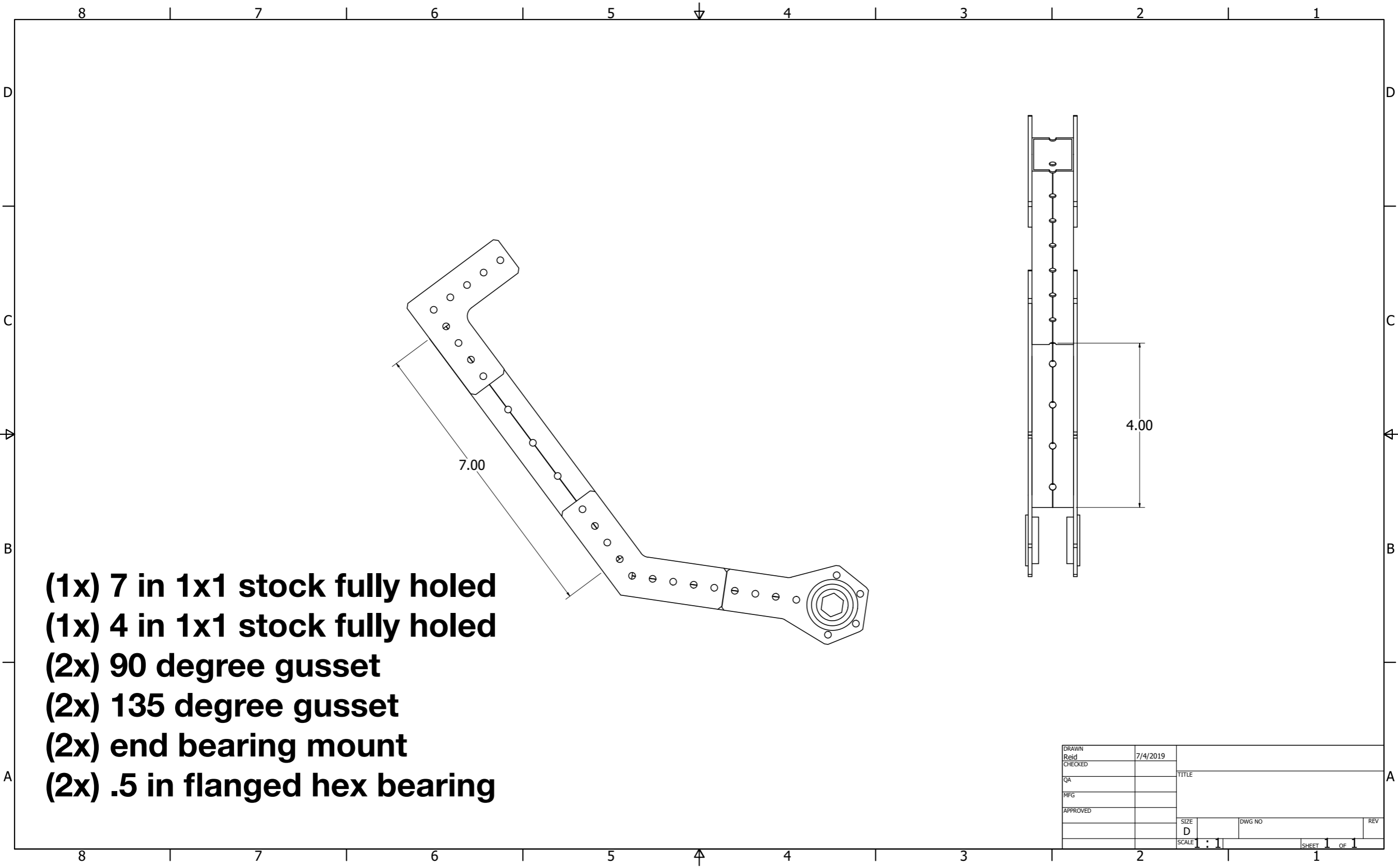


# A Brief Overview

1. Start off by making assembly files of the following. Drawings and images of these assembly files can be found on the following pages:
  1. Side of Intake (pgs. 2-3)
  2. Two 1x2 Stocks Together (pgs. 4-5)
  3. 12 in on top sides of intake (pgs. 6-7)
  4. Spinner (pgs. 8-9)
2. Make a new assembly file and assemble everything together (place the 4 assemblies that you just made as well as all of the other parts). You can find out what parts to use by opening the STEP file of the final assembly. **Make sure to copy all parts to your folder BEFORE placing them in the assembly!!!! Also make sure you SAVE your work every 5-10 mins!!!!**

# Side of Intake



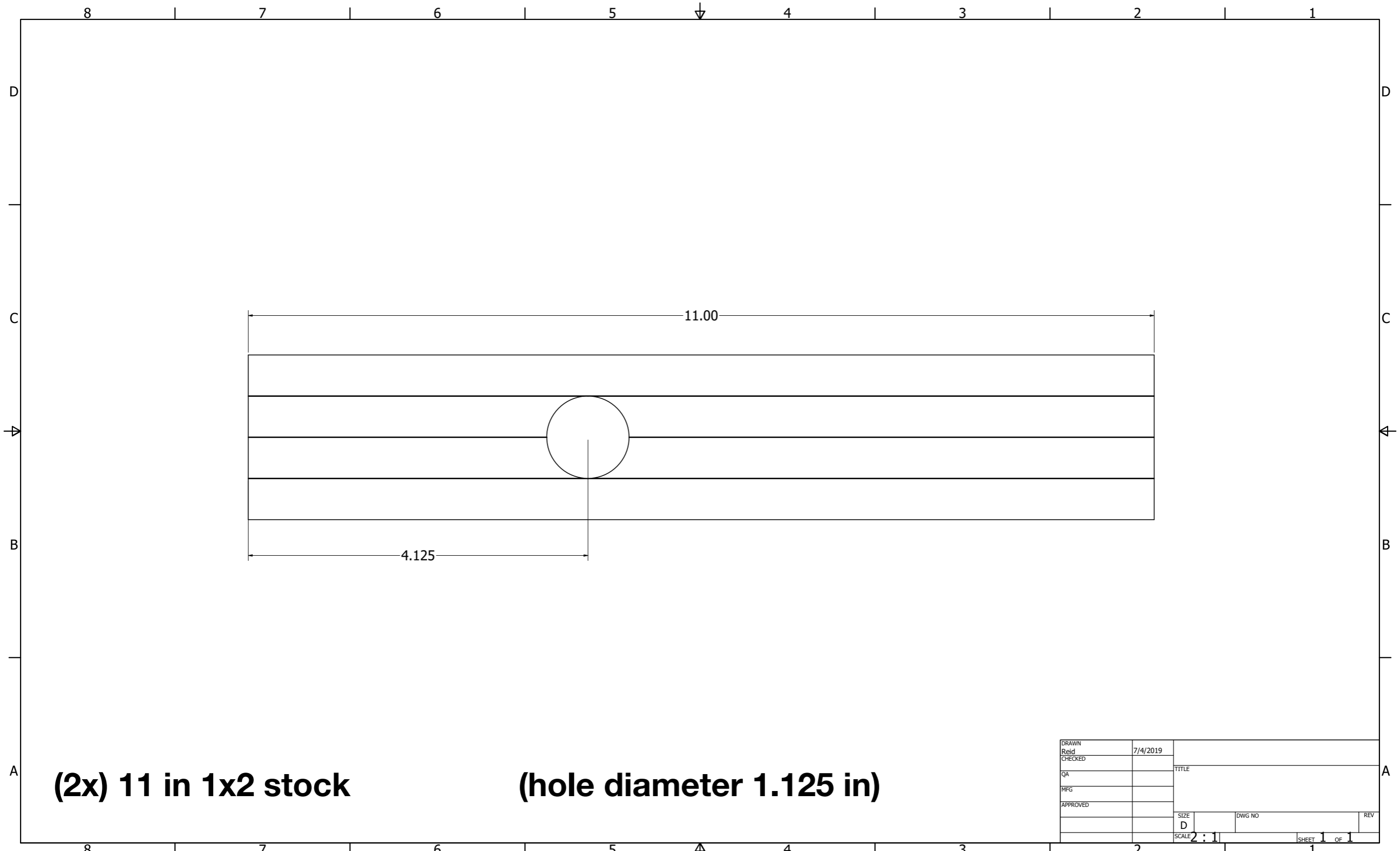
- (1x) 7 in 1x1 stock fully holed**
- (1x) 4 in 1x1 stock fully holed**
- (2x) 90 degree gusset**
- (2x) 135 degree gusset**
- (2x) end bearing mount**
- (2x) .5 in flanged hex bearing**

DRAWN Reid	7/4/2019			
CHECKED		TITLE		
QA				
MFG				
APPROVED				
		SIZE D	DWG NO	REV
		SCALE 1 : 1	SHEET 1 OF 1	

# Side of Intake



# Two 1x2 Stocks Together

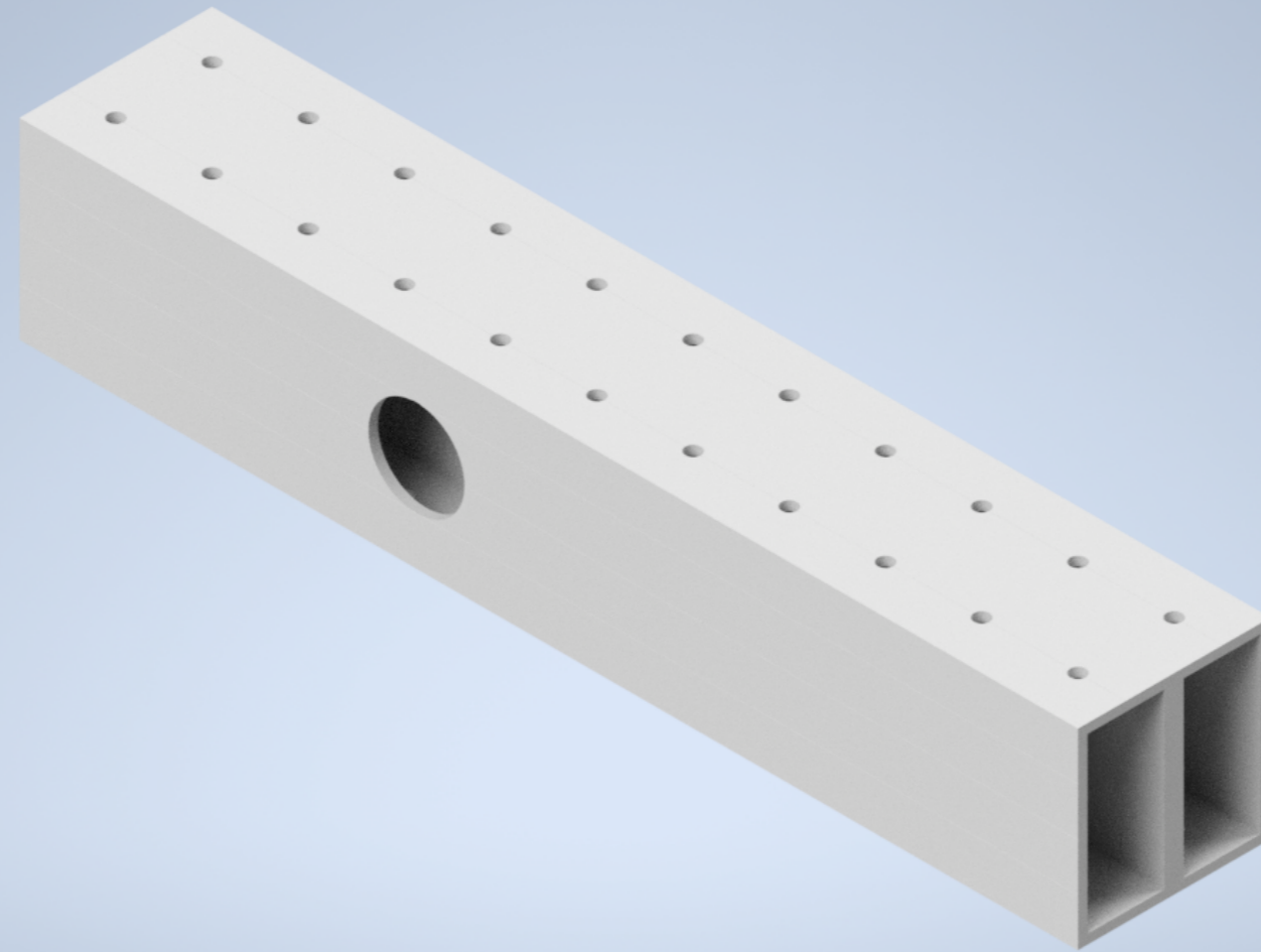


**(2x) 11 in 1x2 stock**

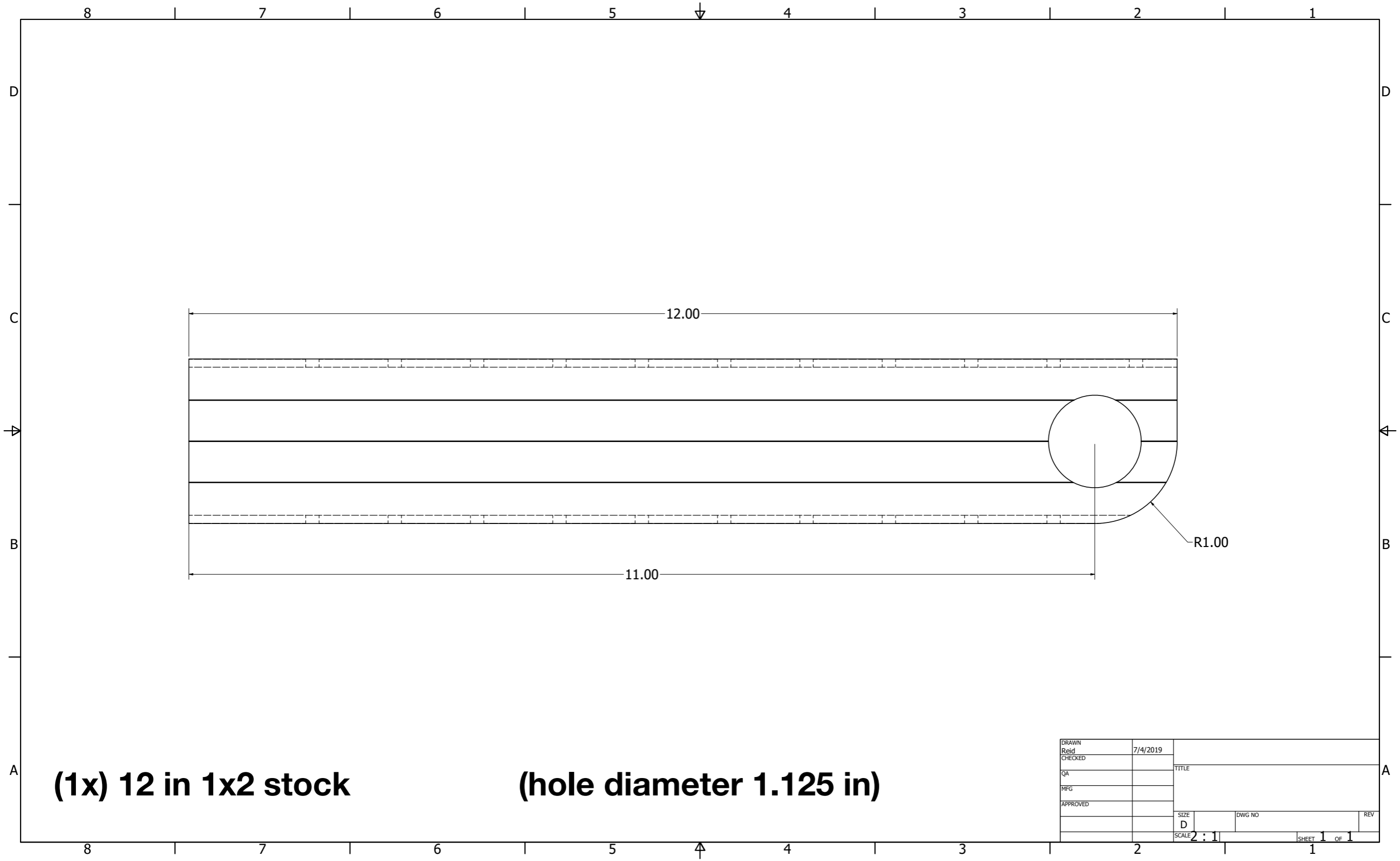
**(hole diameter 1.125 in)**

DRAWN Reid	7/4/2019			
CHECKED		TITLE		
QA				
MFG				
APPROVED				
		SIZE D	DWG NO	REV
		SCALE 2 : 1	SHEET 1 OF 1	

## Two 1x2 Stocks Together



# 12 in on top sides of intake

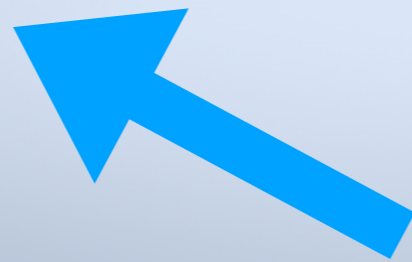
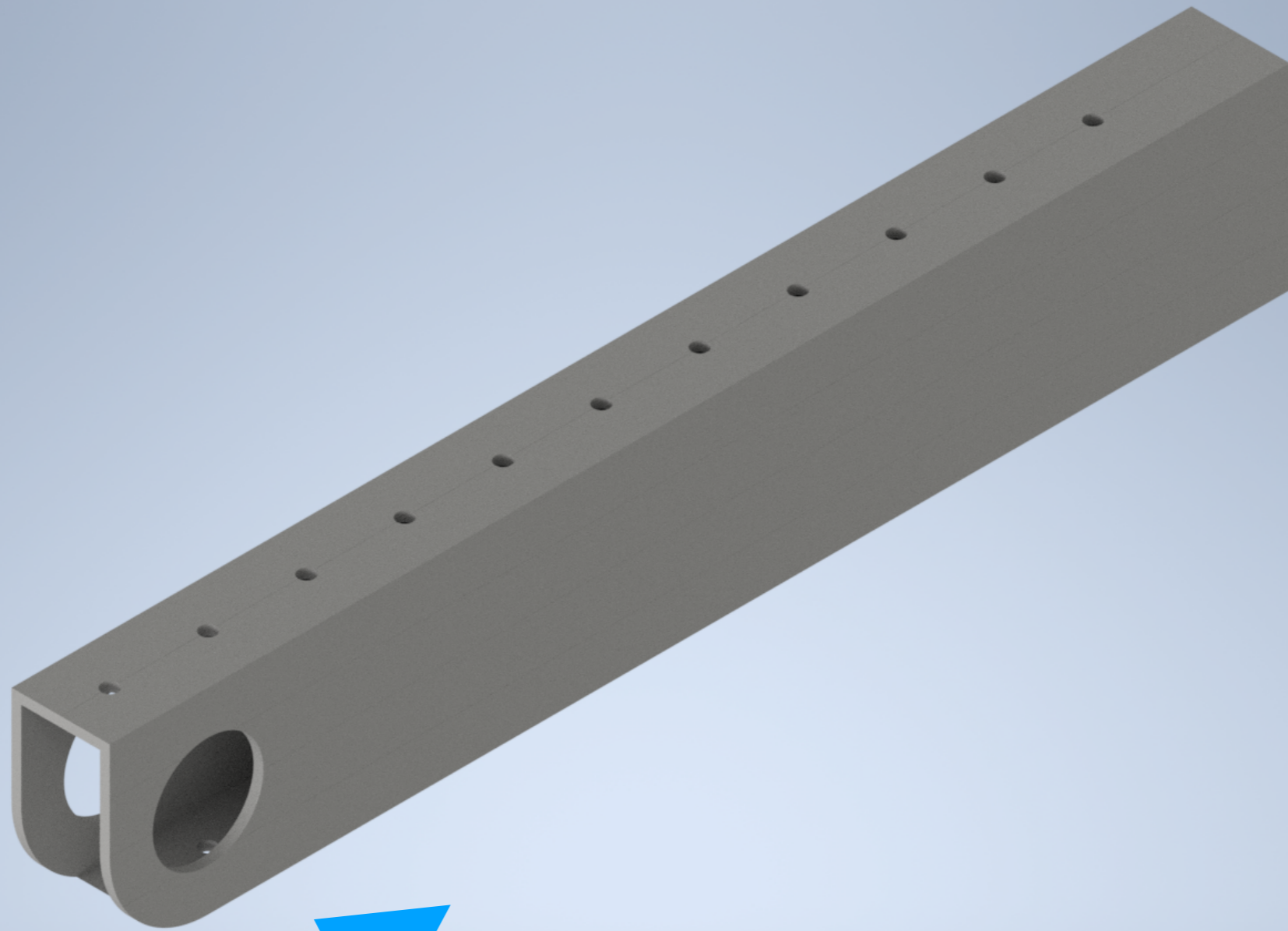


**(1x) 12 in 1x2 stock**

**(hole diameter 1.125 in)**

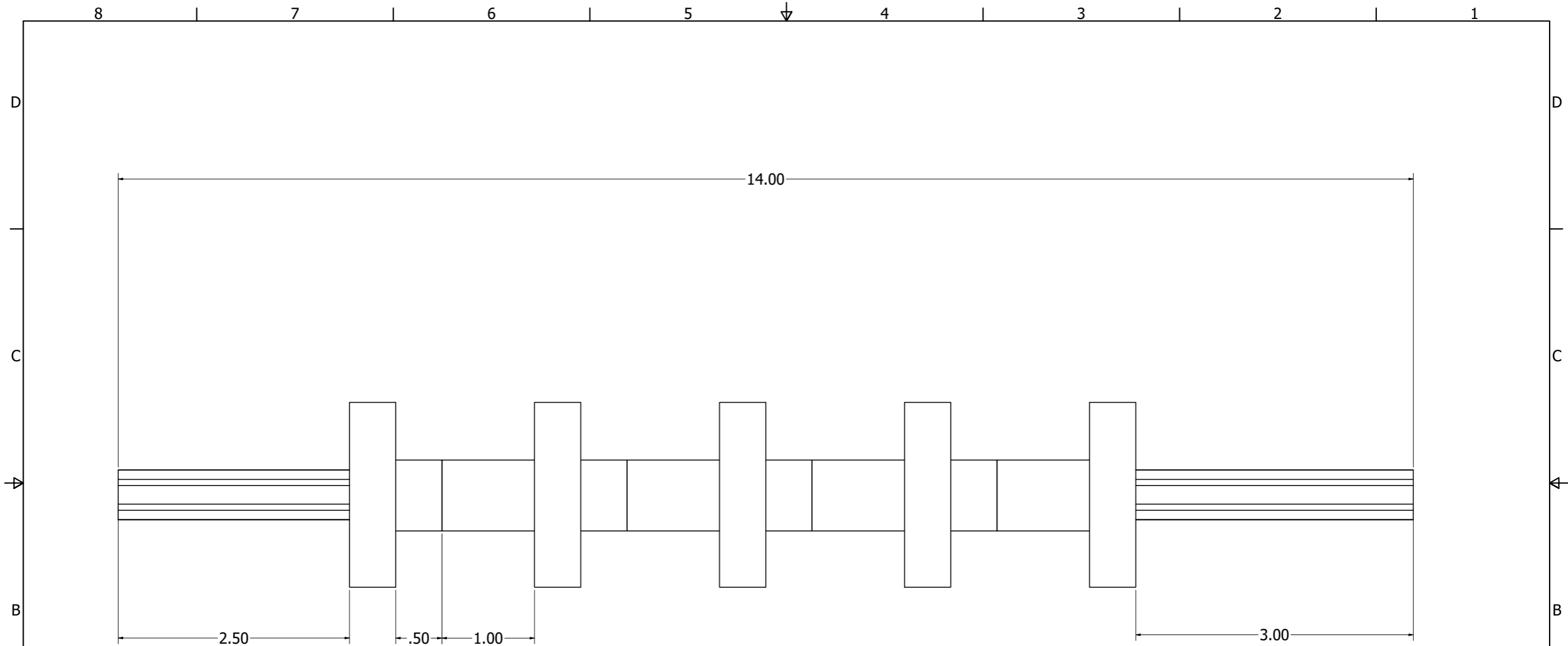
DRAWN Reid	7/4/2019			
CHECKED		TITLE		
QA				
MFG				
APPROVED				
		SIZE D	DWG NO	REV
		SCALE 2 : 1		SHEET 1 OF 1

**12 in on top sides of intake**



**This should have  
two bearings in it!  
Sorry this pic isn't  
accurate!**

# Spinner

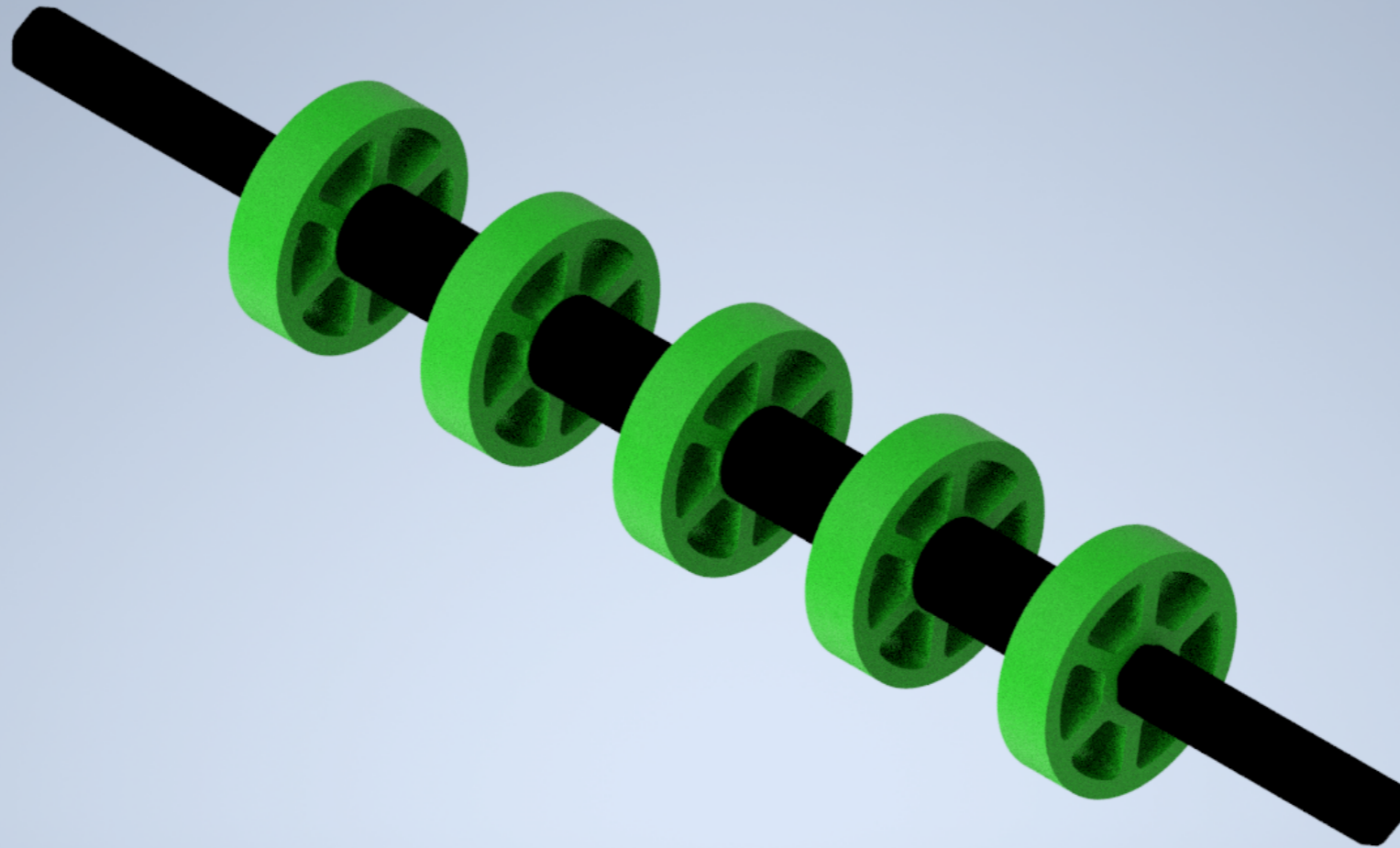


- (1x) .5 in 14 in hex shaft**
- (5x) 2 in flex wheels**
- (4x) .5 in .5 in hex spacer**
- (4x) .5 in 1 in hex spacer**

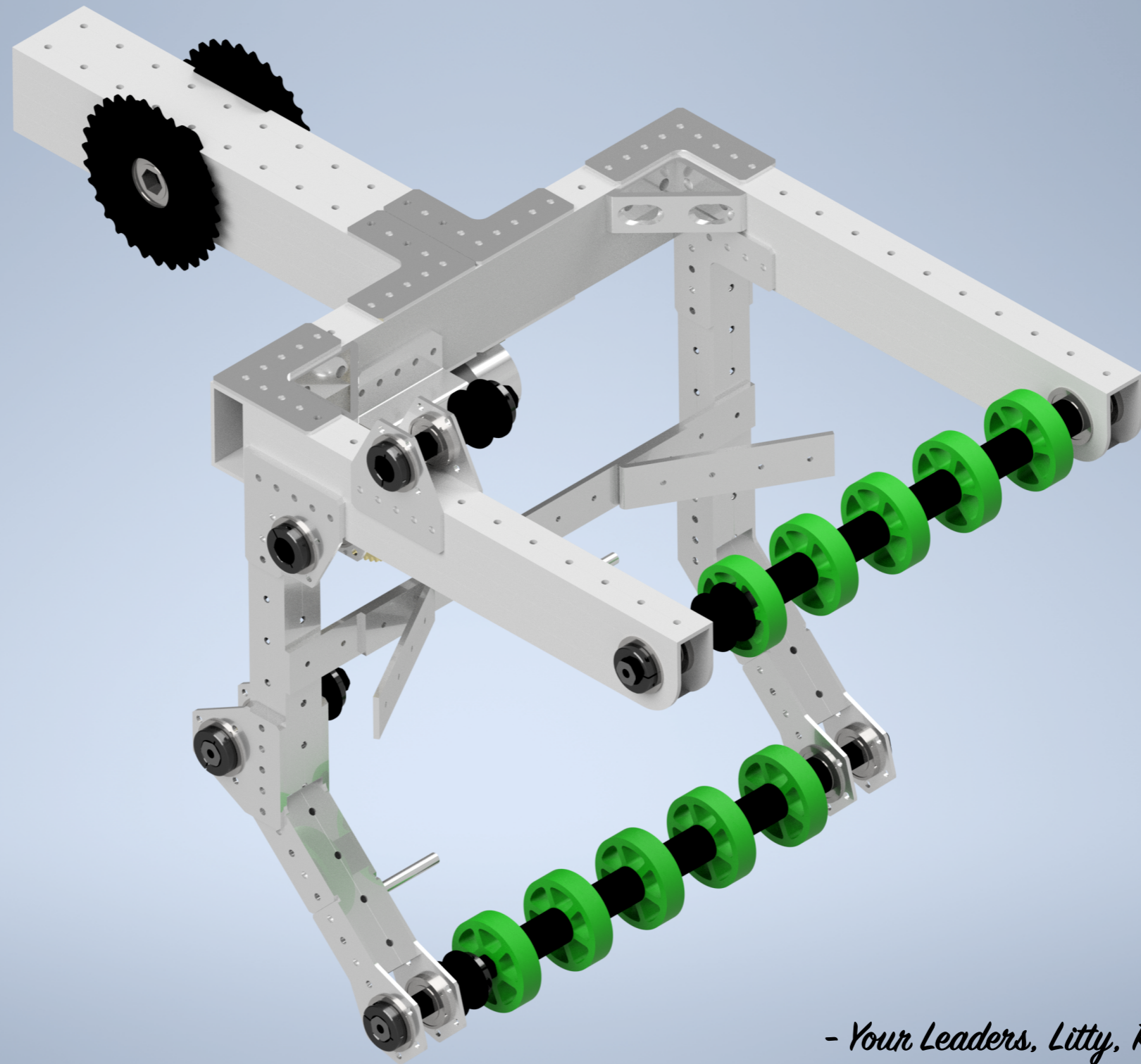
DRAWN	7/4/2019		
Reid		TITLE	
CHECKED			
QA			
MFG			
APPROVED			
		SIZE	DWG NO
		D	
		SCALE	SHEET 1 OF 1
		2 : 1	



# Spinner



# Good Luck! You got this!



*- Your Leaders, Litty, Reid, Saif, (and Cole)*